



May 2010

PROFESSIONAL ESTIMATOR

Denver, Chapter 5

NW Region Newsletter of the Year 2003-07; National Newsletter of the Year 2004-05

In This Issue

President's Message 1,4

Feature Article

*"An Estimator's Experience
with the Down Economy"*
by Gary Fallico 2-3

Meet Your Board
Eric Ross 3

May Program Info 4

ASPE Code of Ethics 4

Membership Statistics 4

Education Committee
Update 5

2010 Emerging Business
Estimating Academy 6-8

*"The Methodology for
Estimating the Quantities and
Costs of the Structural Steel
Components of a Simple
Framed Structure - Part 2"*
by Gary W. Beatty 8-10

Member Company Roster 11

Golf Tournament Info 11- 12

Board Members and
Committee Chairs 13

ASPE Contact Info 13

May Program

Denver Chapter

A Celebration of Past, Present and Future

Program information on
page 4...

CHAPTER MEETING NOTICE

Date: Tuesday, May 11, 2010

Time: Gather: 5:00 p.m.
Dinner: 6:00 p.m.

Place: Red Lion Hotel
4040 Quebec Street
Denver, CO 80216
(303) 321-6666

Cost: \$45.00 w/registration*
\$50.00 w/o registration*
\$25.00 for students

*\$5 off if you register by May 4



MESSAGE FROM YOUR PRESIDENT

Heather Boulanger

Last month's get-together was a jobsite tour of the Green Valley Ranch School in Denver.

This is a large complex: The campus encompasses 35 acres, with multiple buildings to accommodate Preschool through 12th grade. It was designed to give an academy feel, with all sports fields being shared by the 1,200 students expected to attend.

This is the first new high school facility in 30 years in Denver. It is also a LEED Silver project.

There are many unique features on it, but the one that most interested me was the geo-thermal heating and cooling system. This consists of a "Slinky" system, which is buried 10 feet under the sports fields and supports the heat pumps throughout the facility. Each heat pump has its own back-up and they cycle alternatively.

They also have a very aggressive energy goal of achieving an average energy...

Continued on page 4...

An Estimator's Experience with the Down Economy

by Gary Fallico, Senior Project Manager, Weifield Group

FEATURE ARTICLE

Many of us in the construction business have experienced the slowdown over the last couple of years. Sales are down, work is scarce, and the margins are slim on any work that you do have. This is not the first time the industry has suffered a slowdown and it certainly will not be the last. When you've been in the electrical trade just short of 40 years like I have, you think you have experienced everything. I have worked for large contractors on multi-million dollar projects, helped start one of the largest electrical contractors in Colorado, spent three years working for a general contractor who specialized in water treatment plants, roped more house than I care to remember, ran a target missile fueling facility for Raytheon, and even ran my own contracting company for nearly 10 years. I have done pretty much everything in the industry; I knew what I was doing and have always had a good work ethic, working harder and longer than the next guy. I was never concerned about losing my job; I would always be in demand.

In 1999, I had an offer from one of the larger electrical contractors in Colorado. They offered good pay, great benefits, a good reputation and what seemed like a good fit, so I took the job. Over the last nine years I ran their largest projects and was the company's most profitable project manager. Last year, I transitioned into the estimating department in an attempt to combat the downturn and use my experience to acquire more work. Unfortunately, it wasn't enough. In August of 2009 the company closed its doors. I felt as if someone had punched me in the stomach. The work I had put in the company, the policies and procedures I had helped implement, the relationships with contractors and fellow employees; it was all over!

After catching my breath my first reaction was to get mad and to blame someone. Who was I to blame? The owner for poor management? He lost more than anyone. The other employees for not working hard enough? They lost their jobs too. The U.S. President? The politicians? What about myself? Had I failed? I spent days pondering what I had done wrong and what I was going to do moving forward. Who would want to hire me? The company I was with failed...am I too old to be hired? I'm too young to retire. Is Home Depot an option? How much does unemployment pay? All these questions and more ran through my mind.

I spent the first week filing for unemployment, figuring out a budget and trying to determine what home projects I could do that didn't cost any money. I received a multitude of phone calls from well wishers saying, "What are you going to do now? ...well, if I hear of anything, I'll let you know."

The following week I received a phone call from fellow ASPE board member Jim Dent. I expected the same kind words followed by the usual "if I hear of anything..." However, this call was different. He asked me to come down to his office to talk. I expected an Amway presentation, or maybe Mary Kay, but the company he was working for was the only thing he was selling.

Feature Article continued on page 3...

Jim emphasized that I'd be a good fit because they wanted someone with experience as well as a good reputation in the industry. He was genuinely excited about his company, the ownership team, the company's future plan, and the employees. I couldn't help but get excited just listening to what he had to say. It reminded me of when I had that same enthusiasm about my job. A few days later I took the offer and joined Weifield Group Contracting.

It's been seven months and I'm still excited by this company and the opportunities here! I enjoy coming to work each and every day, I have pride in what I am doing, and the projects we are building. We are not the largest electrical contractor in Colorado but I honestly believe we are one of the best! Maybe that day in August wasn't such a bad thing?

So, to all of our fellow ASPE members that have had a setback, stay positive and keep your head up; more often than not things have a way of working out for the better.

MEET YOUR BOARD - ERIC ROSS

Eric Ross was born on Long Island, New York. During his growing up years, he participated in the Boy Scouts of America and achieved the prestigious Eagle Scout award. He received a Bachelor of Arts degree in Mathematics from Hope College in Holland, Michigan. He then completed a Bachelor of Engineering degree in Civil Engineering from Hofstra University in Hempstead, New York. After working for the City of New York Department of Environmental Protection for a year, he married his college sweetheart and relocated to the metro Detroit area of Michigan. In Michigan, he worked for two highway contractors and a municipal engineering firm over the course of 18 years. Moving to Colorado in 2005, he worked for Arapahoe Utilities & Infrastructure (AUI) and Brannan Construction Company (BCC). He is currently employed by Management Computer Controls, Inc. (MC²). They have been producing estimating software for the construction industry for over 44 years. At MC² Eric assists customers with implementation and customization of Integrated Cost Estimating (ICE) software.

Eric is a registered Professional Engineer in the State of Michigan. He is also a Certified Professional Estimator through the American Society of Professional Estimators (ASPE) and a Certified Construction Contract Administrator through the Construction Specifications Institute (CSI).

Eric is an active member of the American Society of Civil Engineers (ASCE), the American Society of Professional Estimators (ASPE), American Railway Engineering & Maintenance-of-Way Association (AREMA), the Construction Specifications Institute (CSI), the National Society of Professional Engineers (NSPE) and the Project Management Institute (PMI).

Eric is currently the 1st Vice President / Membership Committee Chair of the ASPE Denver Chapter.

ASPE Code of Ethics

- Canon 1** Professional estimators shall perform services in areas of their disciplines and competence.
- Canon 2** Professional estimators should continue to expand their professional capabilities through continuing education programs to better enable them to serve clients, employers and the industry.
- Canon 3** Professional estimators should conduct themselves in a manner, which will promote cooperation and good relations among members of our profession and those directly related to our profession.
- Canon 4** Professional estimators shall safeguard and keep in all confidence all knowledge of the business affairs and technical procedures of an employee or client.
- Canon 5** Professional estimators shall conduct themselves with integrity at all times and not knowingly or willingly enter into agreements that violate the laws of the United States of America or of the states in which they practice. They shall establish guidelines for setting forth prices and receiving quotations that are fair and equitable to all parties.
- Canon 6** Professional estimators shall utilize their education, years of experience and acquired skills in the preparation of each estimate or assignment with full commitment to make each estimate or assignment as detailed and accurate as their talents and abilities allow.
- Canon 7** Professional estimators shall not engage in the practice of "bid peddling" as defined by this code. This is a breach of moral and ethical standards, and a member of this society shall not enter into this practice.
- Canon 8** Professional estimators and those in training to be estimators shall not enter into any agreement that may be considered acts of collusion or conspiracy (bid rigging) with the implied or expressed purpose of defrauding clients. Acts of this type are in direct violation of the Code of Ethics of the American Society of Professional Estimators.
- Canon 9** Professional estimators and those in training to be estimators shall not participate in acts, such as the giving and receiving of gifts, that are intended to be or may be construed as being unlawful acts of bribery.

President's Article continued from page 1...

consumption of 25,000 BTU/square foot/year, which is 1/3 the energy consumption of the average conventional building. They intend to achieve this through a variety of highly sustainable energy and utility reducing features.

This school is set to open this fall. Needless to say, the subcontractors on this project will have a very busy summer.

Heather Boulanger: (303) 659-7861, ext 112; Email: heather@rollingplains.com

MAY PROGRAM DESCRIPTION

Come join us and celebrate our chapter's past and plan our future. This month's meeting will include hearing from a few of the pioneers of the Denver chapter, awarding several long term service pins, recognizing new officers and board members, and spotlighting some of the future activities and plans for the chapter. We hope to see you there! Register at:

<http://aspedenver.eventbrite.com/>

Membership Statistics (as of Mar. 31, 2010)

Current Membership Count 111

Chapter Membership Classifications:

25.23%	28	Certified Professional Estimator (CPE)
55.86%	62	Estimator (E)
9.91%	11	Associate Member (ASM)
1.80%	2	Constructor (C)
1.80%	2	Student (S)
3.60%	4	Affiliate Member (AF)
0.00%	0	Member Emeritus (ME)
0.00%	0	Honorary Member (HM)
1.80%	2	Fellow (FCPE)
100%	111	TOTAL

ASPE Education Committee Update
by Warren Neubauer, Education Committee Chairperson

I just got back from attending a very informative ASPE CSU student chapter meeting. It was postponed from last month due to one of the many springtime snow storms. Tonight's agenda was very informative and consisted of a representative from the Quick Pen estimating company giving a demonstration on the basic workings of their system. The CSU construction department has been able to acquire a work station from Quick Pen which they will use to educate their students by performing actual take-offs. The program was well attended with approximately 22 students participating. No, our student chapter has not grown this large; they decided to do a joint meeting with the CSU MCA, (Mechanical Contractors Association) chapter. It was also good to hear that a couple of our chapter members have been able to find summer employment as estimators! But on the down side there are quite a few students who are basically taking the summer off or doing work outside of the construction trades because of this economy. I really wish things would turn around so most of these young people could find a career in the direction they have chosen to pursue.

On another note, we have just about finished our 2010 Emerging Business Estimating Academy agenda with the HCC association and have also acquired some presenters for a few of the topics. We need to give a big thanks to the Hensel Phelps Construction Company for stepping up and volunteering! I have attached a copy of the syllabus that Eric Ross and I have developed, (Ok, actually Eric has done most of the compiling of ideals and has put a lot of devoted time into this project as a whole. Thanks Eric!)

Stay turned for further updates and remember, send any suggestions you may have to Warren Neubauer at warren.neubauer@msn.com or call me at 303-241-1984.



The ASPE Denver Chapter takes a break from programs and the newsletter for the summer. Be sure to participate in our annual golf tournament at Eagle Trace on Friday, June 4! Enjoy the Colorado sunshine!

2010 Emerging Business Estimating Academy by Eric Ross, CPE

.....

We are fortunate to have someone like Warren Neubauer (2nd Vice President / Education Committee) in our Chapter that has been talking with other organizations in the Denver Metropolitan Area Construction Industry that can benefit from our ASPE Chapter services. His efforts are now just coming to fruition.

On Tuesday, March 9, 2010 I was fortunate to be a participant in a meeting with Helga Grunerud, Executive Director, Hispanic Contractors of Colorado; Katrina Wert, Office of Economic Development, Workforce Development, City and County of Denver; Alejandra Spray, Marketing Coordinator, AMI Mechanical Inc.; Warren Neubauer, Pre-Construction Services, Murphy Company. This meeting was the initial collaboration between parties to discuss the possibility of an Estimating Academy to provide basic estimating training to members of the Hispanic Contractors of Colorado (HCC). According to the City and County of Denver HCC members fall under the classification of Minority Business Enterprise (MBE). Those members are eligible for Economic Development funds through the City and County of Denver to defray the cost of training and education. HCC has determined that within the Denver Metropolitan Area, there does not exist any basic estimating courses outside higher education institutions. Many if not all of these courses are only offered during the day. For business owners in HCC that is not a viable option. Therefore an alternative needs to be found. This is where the local ASPE Chapter comes into the picture.

The wonderful thing about this collaboration is that we as a Chapter of ASPE are living up to both our **ASPE Mission Statement**:

"The American Society of Professional Estimators serves Construction Estimators by providing Education, Fellowship, & Opportunity for Professional Development."

and **ASPE Motto**:

"Dedicated to the promotion of the profession of estimating and to the benefit of the construction industry."

For a number of years the Denver Chapter #5 has been one of the largest Chapters in the nation based on membership roles. We are currently at 115 members. As such we must be a leader and demonstrate to other Chapters what can be done to promote the National Association and live up to our commitment to the Construction Industry.

Our collaboration with HCC will result in a secondary benefit that will generate new members in our Chapter. Becoming a member of a professional association like ASPE there are benefits unparalleled anywhere in the industry.

What we are collaborating with HCC on is to develop a basic estimating program to assist their members. Many if not all estimating programs available are at a level that is too advanced. Our task is to develop a simple program over a number of weeks that will provide the basics.

Estimating Academy continued on page 7...

2010 Emerging Business Estimating Academy

Our tentative estimating series syllabus is as follows.

2010 Emerging Business Estimating Academy – Proposed Class Syllabus

(Dates & Times are tentative, must be coordinated with HCC members)

Session 1 – Wednesday, May 26, 2010

5:45pm – 7:00pm	<i>Marketing, bid planning, and scope review</i>
7:00pm – 7:15pm	Dinner (included with conference registration)
7:15pm – 8:30pm	<i>Blueprint reading, quantity takeoff for all trades and divisions</i>

Session 2 – Wednesday, June 2 2010

5:45pm – 7:00pm	<i>Pricing of material, labor, and equipment</i>
7:00pm – 7:15pm	Dinner (included with conference registration)
7:15pm – 8:30pm	<i>Sub-trade quote evaluation</i>

Session 3 – Wednesday, June 9, 2010

5:45pm – 7:00pm	<i>Overhead, profit, and bid procedures</i>
7:00pm – 7:15pm	Dinner (included with conference registration)
7:15pm – 8:30pm	<i>Cost analysis, value engineering, and change order pricing</i>

Session 4 – Wednesday, June 16, 2010

5:45pm – 7:00pm	<i>Excel spreadsheet estimating tutorials</i>
7:00pm – 7:15pm	Dinner (included with conference registration)
7:15pm – 8:30pm	<i>Proposal writing</i>

The topics are basic in nature and progress through the whole estimating process from start to finish. We have communicated our intent with ASPE National and have been pleasantly surprised with their support in providing each participant with a frameable certificate issued after course completion.

[Estimating Academy continued on page 8...](#)

2010 Emerging Business Estimating Academy

Early on I mentioned participation from City and County of Denver in the form of funding. The Denver Chapter will be submitting paperwork to become an approved Training Organization to solidify participant eligibility for funding. This will require us to resubmit paperwork on an annual basis to maintain our eligibility as an approved Training Organization. This will open up opportunities for future estimating training or awareness of our annual Estimating Academy we have successfully presented for the past 4 years (2007, 2008, 2009, 2010).

We are also investigating accreditation of this Estimating Series through a partner that we have within the past year provided 2 student scholarships, Red Rocks Community College (RRCC). An initial dialogue with Cathy Rock at RRCC we have determined with meeting some very minor requirements we can have this program accreditation through RRCC. Since we are on a tight schedule for the first run of this series, accreditation through RRCC but will be in place for the second time we present this series.

In the future we will investigate accreditation of this program through ASPE National. The process is more involved to get accreditation through ASPE that is why we are looking at this as a future milestone.

As this program expands and we tweak the program as needed to get it in the final version. We are considering the possibility of a Spanish version to meet a different sector of the Construction Industry.

As you can see we are very excited about the progress we have achieved to date and are looking forward to the first Emerging Business Estimating Academy in the Denver Metropolitan Area in the upcoming months.

I would like to thank members of the Denver Chapter, Chapter Board of Directors for their support and participation, HCC, City and County of Denver, and Red Rocks Community College. Without which this project would not have passed the “dream” stage to become a reality.

The Methodology for Estimating the Quantities and Costs of the Structural Steel Components of a Simple Framed Structure PART 2

By Gary W. Beatty, CPE

Step 4. The Quantity Take-Off.

Notes: 1. It is very important to check the drawing scale noted on the drawing with a scale ruler. If there is not a correlation with the drawing scale designated on the drawing then you must be aware that you definitely must not use your scale ruler in the quantity take off process.

2. Refer to the attached “Quantity Take-Off” sheets to confirm the order of take-off. This will also provide insight into all the individual process steps and components of the structure.

[**continued on page 9...**](#)

The Methodology for Estimating the Quantities and Costs of the Structural Steel Components of a Simple Framed Structure

continued from page 8

3. The Structural Steel Estimator should view himself as the “virtual” builder of the structure. The quantity take-off should facilitate the fabrication and installation of the structure, virtually, without getting dirty hands or boots. In his mind, the estimator, should attempt to supply as complete a structure as possible. This will ensure that there will be as few as possible, unforeseen problems, throughout the project, should the project be awarded to your company. This, in turn, leads to a successful and profitable project.

The Foundation Plan. (See the attached 11" x 17" sheet labeled FP-001.)

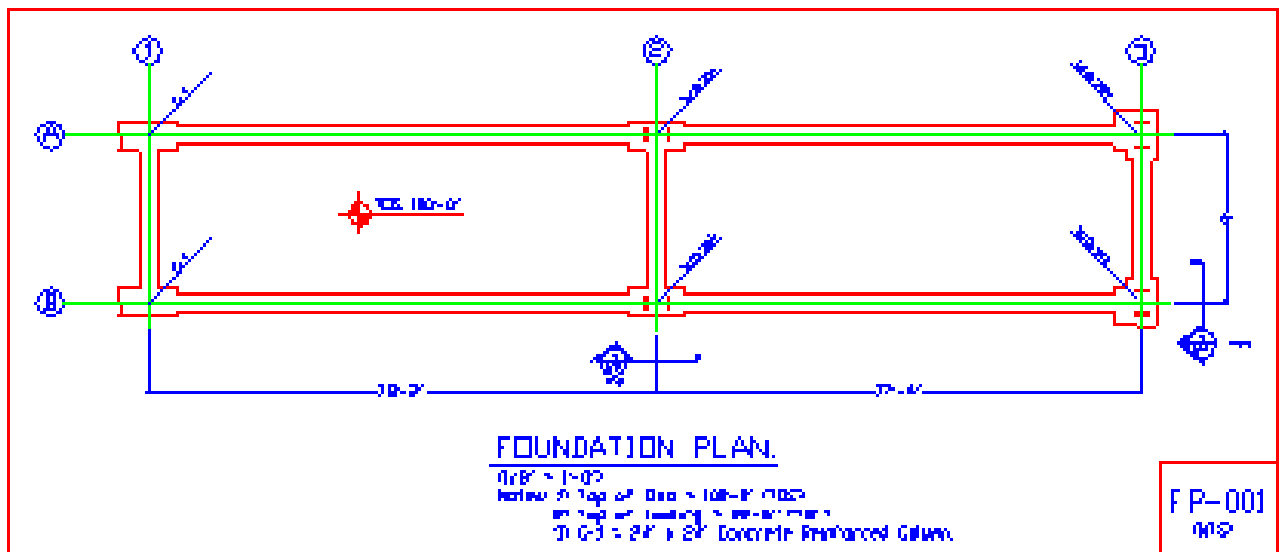
a) Identify the location of the steel columns and proceed to ascertain the type and lengths of the columns required. To do this you will need to identify the conditions and elevations at the base and the top of the column. These conditions allow the length of the column shafts to be calculated. (Reference: - Section Drawing 1/SK-1.)

Note: - I find it helpful to make a note of the column base connection and column cap details in the Notes section of the quantity take-off sheet.

b) From this same section drawing the thickness, size and attachment requirements of the base plate to the column shaft can then be determined. (Reference Section 1/SK-1.)

Note: - To obtain the length of the welded connection of the base plate to the column shaft a good reference, similar to the AISC Publication, Manual of Steel Construction, Allowable Stress Design is helpful. It is also possible to obtain this information from the various steel mills and / or steel service centers, which provide comprehensive catalogs of their products.

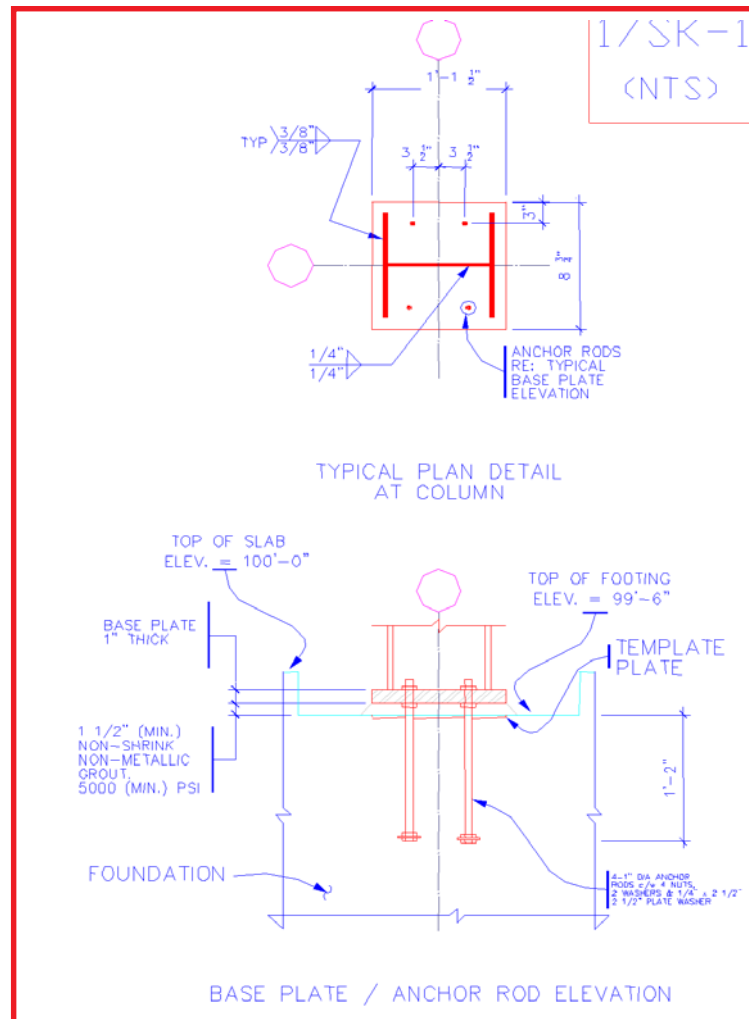
c) Once again this section drawing will provide the type and quantity of anchor bolts and the template plates that will be required. (Reference: - Section Drawing 1/SK-1.)



**Quantity Take Off and Section
Drawing 1/SK-1 found on page 10...**

The Methodology for Estimating the Quantities and Costs of the Structural Steel Components of a Simple Framed Structure

Drawing & Quantity Take Off Examples



ABC STEEL FABRICATION & ERECTION CO.

JOB NAME: ACME Miscellaneous Structural Framing BID # XYZBID BID DATE: 03/15/08 SHT.: 1 OF 5

NOTES / REMARKS	SHEET	DET	QTY	TYPE	SIZE / SPEC	LENGTH	FIN	PHASE	SHOP (EACH)	FIELD (EACH)
	FP-001	-	-	-	COLUMNS					
BASE CAP. A/BOLTS										
1SK-1, 1SK-3, 1SK-1			2	W	10 x 30	8'-6"	A	COL	1.00	2.25
1SK-1, 1SK-4/1SK-5, 1SK-1			2	W	10 x 30	10'-6"	A	COL	1.00	2.25
	FP-001	-	-	-	COLUMN BASE PLATES					
OXY/ACET CUT PLATES	SK-1	1	4	PL	1" x 8 3/4"	1'-1 1/2"	N	COLX	0.78	0.00
DRILL HOLES IN BASE PLATES FOR A/BOLTS			16	MI	DRILL 1 5/16" DIA HOLES		N	COLX	0.10	0.00
WELD BASE PLATE TO COLUMN SHAFT			4	MI	SHOPWELD 1/4" FILLET	3'-8"	N	COLX	0.38	0.00
	FP-001	-	-	-	A/BOLTS & TEMPLATE PLTS					
4" THREAD / 2" THREAD	SK-1	1	16	AB	1"-8UNC x 18"		N	AB	0.10	0.10
			64	MB	1"-8UNC NUTS		N	AB	0.00	0.00
			32	MB	1" FLAT WASHER		N	AB	0.00	0.00
FABRICATED FLAT BAR WASHER			16	FB	1/4" x 2 1/2"	2 1/2"	N	AB	0.10	0.00
PUNCH HOLE IN FBAR WASHER			16	MI	PUNCH 1 1/16" DIA. HOLE		N	AB	0.025	0.00
TACKWELD FBAR WASHER & NUT TO A/BOLT			16	MI	SHOPWELD 1/4" FILLET		N	AB	0.025	0.00
TEMPLATE PLATES			4	PL	10GA x 8 3/4"	1'-1 1/2"	N	AB	0.15	0.00
PUNCH HOLE IN TEMPLATE PLATE			16	MI	PUNCH 1 1/16" DIA. HOLE		N	AB	0.025	0.00
1 1/2" SHIM PACKS			4	MI	COLUMN SHIM PLTS - 1 1/2"		N	AB	0.00	0.00

Member Company Roster

The following is a list of companies who are represented at ASPE Chapter 5...

Acoustical Concepts
 Adolfson & Peterson Construction
 Akima Construction Services, LLC
 Alliance Construction Solutions
 Alutiiq
 Amick Group, LLC
 ARC Integrated Program Management
 Assoc. Construction Consultants
 Black Roofing, Inc.
 Building Tech Consultants, Inc.
 C.P.C. Painting Inc.
 Casson Duncan Construction
 Catamount Constructors
 CDM Constructors
 CFC Construction Company
 CH2M Hill
 CLC Associates, Inc.
 Cutting Edge Construction Services, LLC
 deb Construction Company, Inc.
 Demand Construction Services, Inc.
 Denver Drywall Company
 Design Mechanical Inc.
 Douglas Roofing
 E&K of Denver
 Eastcliffe Construction
 Encore Electric
 Golden Triangle Construction
 Heartland Acoustics & Interiors
 Heggem-Lundquist
 Howell Construction
 Hyder Construction, Inc.
 Interior Alterations, Inc.
 J.E. Dunn
 Jacobs Facilities, Inc.
 JKM Masonry
 J.R. Huston Consulting
 Kellogg, Brown & Root, Inc.
 Kenny Electric Service
 Kiewit Building Group
 Landtech Contractors Inc.
 Ludvik Electric
 M.A. Mortenson Construction
 Madsen Kneppers & Associates
 Main Electric
 Management Computer Controls
 Maxwell Builders
 Merrick & Company
 Metro Steel Fabricating
 Monument Roofing Systems
 Mountain Steel & Supply Company
 Murphy Company
 MWH Constructors
 PA Consulting Group

ASPE Annual Golf Tournament is Coming Up!

The 2010 Annual ASPE Denver Chapter Golf Tournament is being held on Friday, June 4th at Eagle Trace Golf Course in Broomfield, Colorado. Registrations have been coming in and Heartland Acoustics has generously signed up to be a Tournament Sponsor. We need everyone's help to continue spreading the word about this great networking opportunity. Multiple levels of sponsorships and participation are available. Spread the word to all of your contacts and we'll see everyone out on the golf course!

Palace Construction Co.
 Pasterkamp Heating & Air Conditioning
 PCL Construction Services
 Pinkard Construction
 Piper Electric
 Powers Products
 Precision Construction Solutions
 Professional Investigative Engineers
 Progressive Roofing, Inc.
 R.D. Simmermon & Company
 RFP Consulting, Inc.
 Rider Levett Bucknall
 Roche Constructors
 Rolling Plains
 Schommer Construction, LLC
 Shaw Construction
 Sturgeon Electric
 Sunstate Equipment
 T.P. Enterprises, Inc.
 Tapa EC, LLC
 Tetra Tech
 The Blue Book
 TJS Construction
 Total Plumbing, Inc.
 Trautman & Shreve, Inc.
 Universal Forest Products
 Weifield Group Contracting
 West Electric
 Weston Solutions, Inc.



ASPE Denver Chapter 2010 Annual Golf Tournament

Friday, June 4, 2010 Eagle Trace Golf Course
7:30 AM Shotgun Start 1200 Clubhouse Drive, Broomfield, Colorado 80020

Eagle Trace Golf Club offers a picturesque, Dick Phelps designed course, featuring spectacular Rocky Mountain views, five large lakes, 65 sand bunkers, and huge native cottonwood trees. The ASPE Denver Chapter is pleased to once again host its Annual Golf Tournament at the “challenging but fair” Eagle Trace Golf Course. This year’s tournament will be a Four- Person Best Ball Format. Time of play usually averages 4 ½ to 5 hours. Upon completing play, we will have a grilled lunch and awards ceremony. This is a phenomenal networking event. Bring your clients and colleagues!

Levels of Participation:

Tournament Sponsor - \$700

- 1 Foursome - Company name displayed at check-in, on a tee box, and at the awards luncheon
- Includes golf cart, sleeve of balls, lunch, and awards ceremony

Lunch Sponsor - \$500

- Recognition as the luncheon sponsor - Company name displayed at check-in and at the luncheon

Beverage Cart Sponsor - \$500

- Recognition as the beverage cart sponsor
- Company name displayed at check-in and on the drink cart

Award Sponsor - \$500

- Recognition as the award sponsor - Company name displayed at check-in and during the awards ceremony

Hole Sponsor - \$200

- Recognized as a sponsor of the ASPE Denver Chapter with a tournament tee box sign

Foursome

- 1 Foursome - Includes golf cart, sleeve of balls, lunch, and awards ceremony

Early Registration: Before May 14

\$550

Standard Registration: After May 14

\$625

Individual

- 1 Player - Includes golf cart, sleeve of balls, lunch, and awards ceremony

Early Registration: Before May 14

Member - \$140

Non-Member - \$150

Standard Registration: After May 14

Member - \$165

Non-Member - \$175

ASPE Denver Chapter 5
P.O. Box 3948
Parker, CO 80134
720.248.2770
info@aspedenver.org
www.aspedenver.org

Association Management:
Third Eye Group
nsingleton@thirdeyegroup.com

OFFICERS:

President: Heather Boulanger

Rolling Plains, Inc., Email: heather@rollingplains.com

1st Vice President: Eric Ross, CPE

Management Computer Controls, Email: laurenanderic@comcast.net

2nd Vice President: Warren Neubauer

Murphy Company, Email: wneubauer@murphy-den.com

3rd Vice President: Marc Reid, CPE

dcb Construction, Email: amreid@comcast.net

Secretary: Jim Dent

Weifield Group Contracting, Email: jdent@weifieldgroup.com

Treasurer: Steve Larson

Design Mechanical Inc., Email: slarson@comfortsystemsusa.com

BOARD OF DIRECTOR MEMBERS:

Gary Beatty, CPE, Mountain Steel & Supply Company, garyb@mountainsteel.com

Chip Caldwell, CPE, Encore Electric, 2otc@qx.net

Gary Fallico, Weifield Group, gfallico@weifieldgroup.com

Cole Mayer, Adolfson & Peterson Construction, cmayer@a-p.com

Craig Tarr, CPE, Madsen Kneppers & Assoc., ctarr@mkainc.com

COMMITTEES:

Awards Committee Chair:

Kye Holtan-Brown, CPE, Pinkard Construction

(303) 345-2842 Email: kyeholtanbrown@yahoo.com

Certification Committee Chair:

Bruce Thompson, CPE, Merrick & Company

(303) 751-0741 Email: bruce.thompson@merrick.com

Education Committee Chair:

Warren Neubauer, Murphy Company

(303) 576-3875 Email: wneubauer@murphy-den.com

Ethics Committee Chair:

Marc Reid, CPE, dcb Construction

(303) 287-5525 Email: amreid@comcast.net

Industry Liaison:

Chris Morton, CPE, Howell Construction

(303) 899-4784 Email: cmorton@howellconst.com

Membership Committee Chair:

Eric Ross, CPE, Management Computer Controls

(800) 225-5622 Email: laurenanderic@comcast.net

Program Committee Chair:

Ralph Kasper, CPE, Adolfson & Peterson Construction

(303) 363-7101 Email: rkasper@a-p.com

Newsletter Committee Chair:

Chris Morton, CPE, Howell Construction

(303) 899-4784 Email: cmorton@howellconst.com

Newsletter Editor/Webmaster

Suvi Caton, CPSM, LEED AP, Strategic Marketing Concepts (SMC)

(720) 480-5187 Email: suvicaton@smc-strategy.com